

Creemore Santa Claus Parade

FLOAT REGISTRATION, RULES AND REGULATIONS

We invite you to give our parade goers a Christmas experience true to time through music, authentic costume, customs, and decoration! All types of entries are encouraged - Floats, Bands, Characters, Dance Troupes and even your animal acts.

Parade Entry Submission Form & Fees

Please complete on our online registration form or call V a 705-466-9906 to register. Ensure you ACCURATELY describe your float entry for SIZE and MUSIC. This will effect where your entry will be positioned in relation to other entries.

The fee of \$20 can be made in cash on the day of the event or by making the cheque payable to: The Creemore BIA, Box 2062, Creemore, ON. L0M 1G0. Payment must be received from ALL participants prior to their entry in the parade.

Liability:

Each entrant must provide its own insurance coverage and agrees, by participating, to hold the Creemore BIA and the Corporation of the Township of Clearview free of liability for any accident or injury caused by or involving a unit and its vehicles or people.

Float Safety:

- All vehicles and floats shall be inspected for SAFETY and DECORATION prior to entry into the Marshalling area. If the entry does not meet safety standards, participation in the parade will be denied. The driver must have clear vision ahead and to the sides.
- In the event of emergency, the driver and all personnel on the floats must be able to get off the floats immediately.
- Floats must be safe. There will be no sharp edges or protruding nails
- Railings or handlebars must be provided for all riders who are standing
- All children must be sitting
- All drivers must be licensed to drive the vehicles they are operating
- Generator and/or vehicle exhaust pipes must extend beyond the decorations
- All powered equipment shall be CSA/UL approved and in good working condition
- Extinguishers (ABC 10 lb. capacity minimum), safety chain and safety hitch chain are required on applicable floats
- Towing vehicles must be in good mechanical condition and be properly serviced.
- NO OPEN FLAMES ARE ALLOWED
- Floats not to exceed a height of 13.5 feet.

Float or Entry Construction:

- All floats and parade entries must be decorated!!

- There shall be only ONE SANTA CLAUS and he will ride on the (official) Creemore BIA Santa Claus Parade Float at the end of the parade
- Each entry is responsible for its own material and services
- If a truck or tractor draws the float, the cab must be decorated
- Any animals must be parade broken and proof of cleanup crew must be provided prior to the parade

Parade Day Conduct

- All entries must be decorated to parade standards
- All vehicles and floats shall be inspected for SAFETY and DECORATION prior to entry into the Marshalling area
- If the entry does not meet safety standards, participation in the parade will be denied
- All entries must conduct themselves in an orderly fashion
- Marchers must walk behind the entry – NOT IN FRONT OF IT
- PARTICIPANTS ARE NOT ALLOWED TO THROW ANTHING ALONG THE PARADE ROUTE. No candy or other “give-aways” to be thrown from the parade entry. If any entry does throw things from the float, the Marshalls have the authority to pull the entry from the parade on the spot.
- No flyers or any advertising to be handed out along the route.

NOTE: REFUSAL TO FOLLOW THE DIRECTION OF PARADE OFFICIALS WILL RESULT IN THE IMMEDIATE EXPULSION OF THE OFFENDING UNIT FROM THE PARADE.

Getting to the Marshalling Area and details

- Parade entries should come into the line-up on County Road 9. Large rigs are asked to remain on County Road 9. In the event of a problem, please call the Parade Marshall on their cell who will assist you
- The parade will formally start moving out onto County Road 9 at 1:30 p.m. sharp! The formal end of the parade is when all entries have come to the end of the route.
- If a float/vehicle breaks down, move it to the side of the road. There will be a vehicle available to assist if necessary. A marshal can reach it by radio.
- The map shows the location of the sections, the marshalling area, parade route, and disbanding area. Note: that the parade route makes a full loop; you will end up back where you started.
- There will be no vehicular traffic within the marshalling area other than the actual floats. Car-pool close to the area; walk-in your float participants! After unloading, vehicles should continue directly to parking in nearby NCPS lot to wait for the parade to finish.

Float Line Up

Your entry will be given a number on the day of the event by the Parade Marshall. The Parade Marshall will be available by cell phone day of the parade. The number will be provided to the main contact for each float in advance of the event.

We look forward to seeing you and to having a great, organized and fun day!

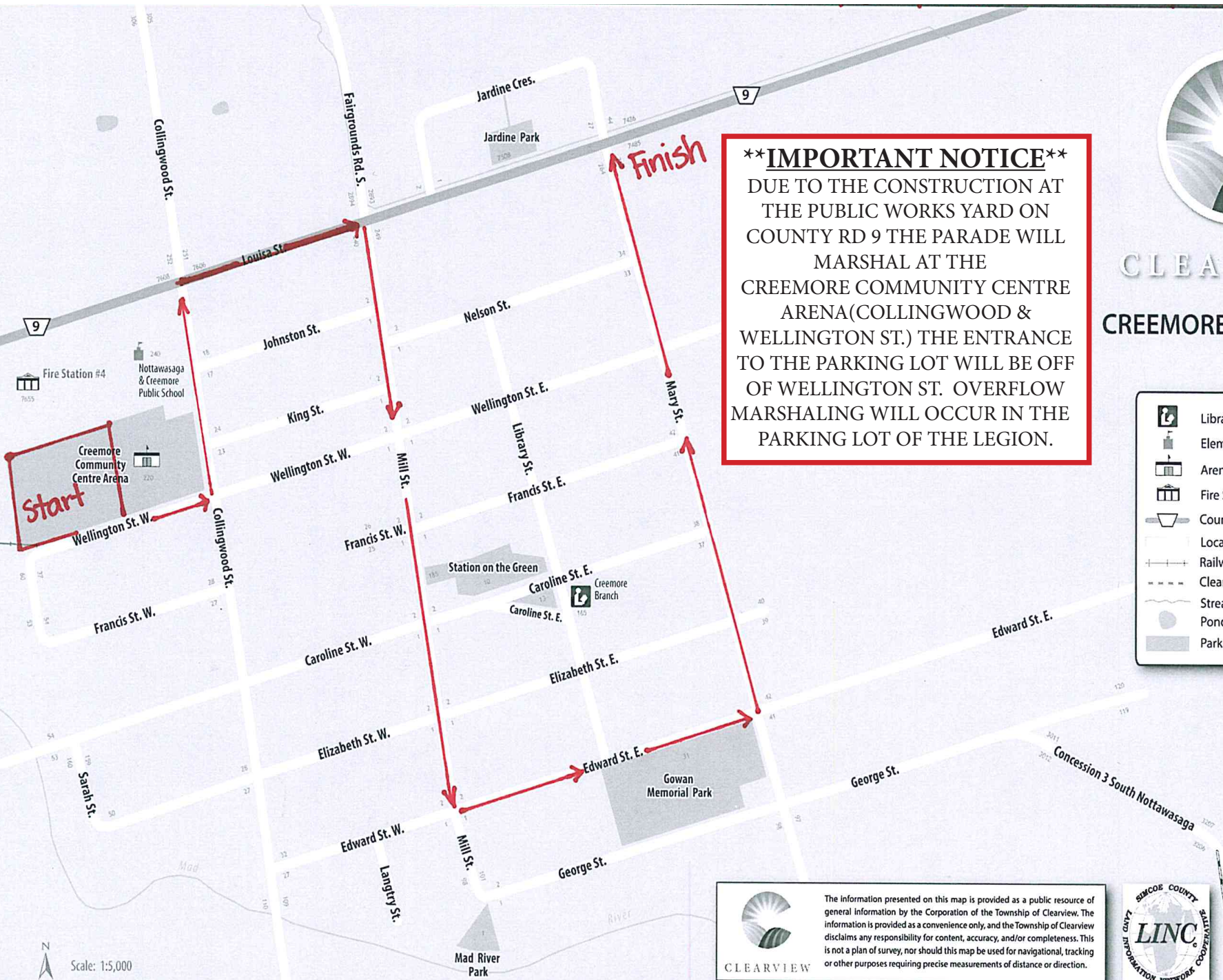
Creemore Santa Claus Parade Route



CLEARVIEW CREEMORE STREET MAP

****IMPORTANT NOTICE****
 DUE TO THE CONSTRUCTION AT THE PUBLIC WORKS YARD ON COUNTY RD 9 THE PARADE WILL MARSHAL AT THE CREEMORE COMMUNITY CENTRE ARENA (COLLINGWOOD & WELLINGTON ST.) THE ENTRANCE TO THE PARKING LOT WILL BE OFF OF WELLINGTON ST. OVERFLOW MARSHALING WILL OCCUR IN THE PARKING LOT OF THE LEGION.

- Library
- Elementary School
- Arena
- Fire Station
- County Road
- Local Road or Street
- Railway
- Clearview Trails
- Stream
- Pond
- Parks & Recreation



The information presented on this map is provided as a public resource of general information by the Corporation of the Township of Clearview. The information is provided as a convenience only, and the Township of Clearview disclaims any responsibility for content, accuracy, and/or completeness. This is not a plan of survey, nor should this map be used for navigational, tracking or other purposes requiring precise measurements of distance or direction.

SIMCOE COUNTY SOUTH
 LAND INFORMATION NETWORK COOPERATION